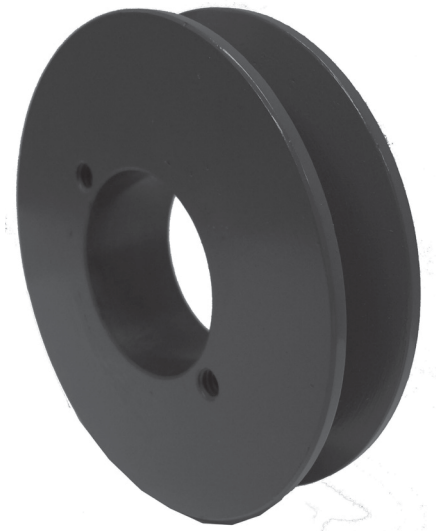


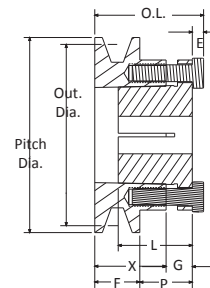
# BKH V-BELT SHEAVES

For 4L, 5L, A or B Belts  
Single Groove  
0.875" Face Width  
Cast Iron  
Split Taper Style  
H Bushing

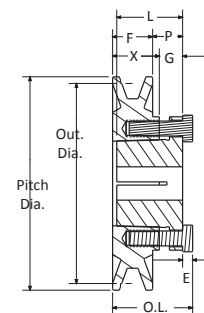


Part Number	Diameters			Type	Dimensions							Wt. Ea. (Lbs.)
	Out. Dia. (in)	Pitch Dia. "A"	Pitch Dia. "3L"		OAL	L	P	C	X	G	E	
BK30H	3.150	2.400	2.800	1	1.938	1.250	0.875	-	1.313	0.438	0.188	1.2
BK32H	3.350	2.600	3.000	1	1.938	1.250	0.875	-	1.313	0.438	0.188	1.4
BK34H	3.550	2.800	3.200	1	1.938	1.250	0.875	-	1.313	0.438	0.188	1.6
BK36H	3.750	3.000	3.400	2	1.500	1.250	0.438	-	0.875	0.438	0.188	1.2
BK40H	3.950	3.200	3.600	2	1.500	1.250	0.438	-	0.875	0.438	0.188	1.4
BK45H	4.250	3.500	3.900	2	1.500	1.250	0.438	-	0.875	0.438	0.188	1.8
BK47H	4.450	3.700	4.100	2	1.500	1.250	0.438	-	0.875	0.438	0.188	2.2
BK50H	4.750	4.000	4.400	2	1.500	1.250	0.438	-	0.875	0.438	0.188	2.0
BK52H	4.950	4.200	4.600	2	1.500	1.250	0.438	-	0.875	0.438	0.188	2.1
BK55H	5.250	4.500	4.900	2	1.500	1.250	0.438	-	0.875	0.438	0.188	2.7
BK57H	5.450	4.700	5.100	2	1.500	1.250	0.438	-	0.875	0.438	0.188	2.7
BK60H	5.750	5.000	5.400	2	1.500	1.250	0.438	-	0.875	0.438	0.188	2.5
BK62H	5.950	5.200	5.600	2	1.500	1.250	0.438	-	0.875	0.438	0.188	2.6
BK65H	6.250	5.500	5.900	2	1.500	1.250	0.438	-	0.875	0.438	0.188	2.8
BK67H	6.450	5.700	6.100	2	1.500	1.250	0.438	-	0.875	0.438	0.188	2.9
BK70H	6.750	6.000	6.400	3	1.563	1.250	0.500	0.063	0.875	0.438	0.188	2.8
BK72H	6.950	6.200	6.600	3	1.563	1.250	0.500	0.063	0.875	0.438	0.188	3.1
BK75H	7.250	6.500	6.900	3	1.563	1.250	0.500	0.063	0.875	0.438	0.188	3.3
BK77H	7.450	6.700	7.100	3	1.563	1.250	0.500	0.063	0.875	0.438	0.188	3.8
BK80H	7.750	7.000	7.400	3	1.563	1.250	0.500	0.063	0.875	0.438	0.188	3.4
BK85H	8.250	7.500	7.900	3	1.563	1.250	0.500	0.063	0.875	0.438	0.188	3.8
BK90H	8.750	8.000	8.400	3	1.563	1.250	0.500	0.063	0.875	0.438	0.188	4.3
BK95H	9.250	8.500	8.900	3	1.563	1.250	0.500	0.063	0.875	0.438	0.188	5.0
BK100H	9.750	9.000	9.400	3	1.563	1.250	0.500	0.063	0.875	0.438	0.188	5.2
BK105H	10.250	9.500	9.900	3	1.563	1.250	0.500	0.063	0.875	0.438	0.188	5.5
BK110H	10.750	10.000	10.400	3	1.563	1.250	0.500	0.063	0.875	0.438	0.188	6.0
BK115H	11.250	10.500	10.900	3	1.563	1.250	0.500	0.063	0.875	0.438	0.188	6.4
BK120H	11.750	11.000	11.400	3	1.563	1.250	0.500	0.063	0.875	0.438	0.188	6.9
BK130H	12.570	12.000	12.400	3	1.563	1.250	0.500	0.063	0.875	0.438	0.188	6.9
BK140H	13.750	13.000	13.400	3	1.563	1.250	0.500	0.063	0.875	0.438	0.188	8.5
BK150H	14.750	14.000	14.400	3	1.563	1.250	0.500	0.063	0.875	0.438	0.188	9.5
BK160H	15.750	15.000	15.400	3	1.563	1.250	0.500	0.063	0.875	0.438	0.188	9.8
BK190H	18.750	18.000	18.400	3	1.563	1.250	0.500	0.063	0.875	0.438	0.188	12.8

**TYPE 1**



**TYPE 2**



**TYPE 3**

